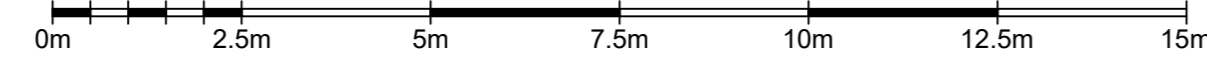




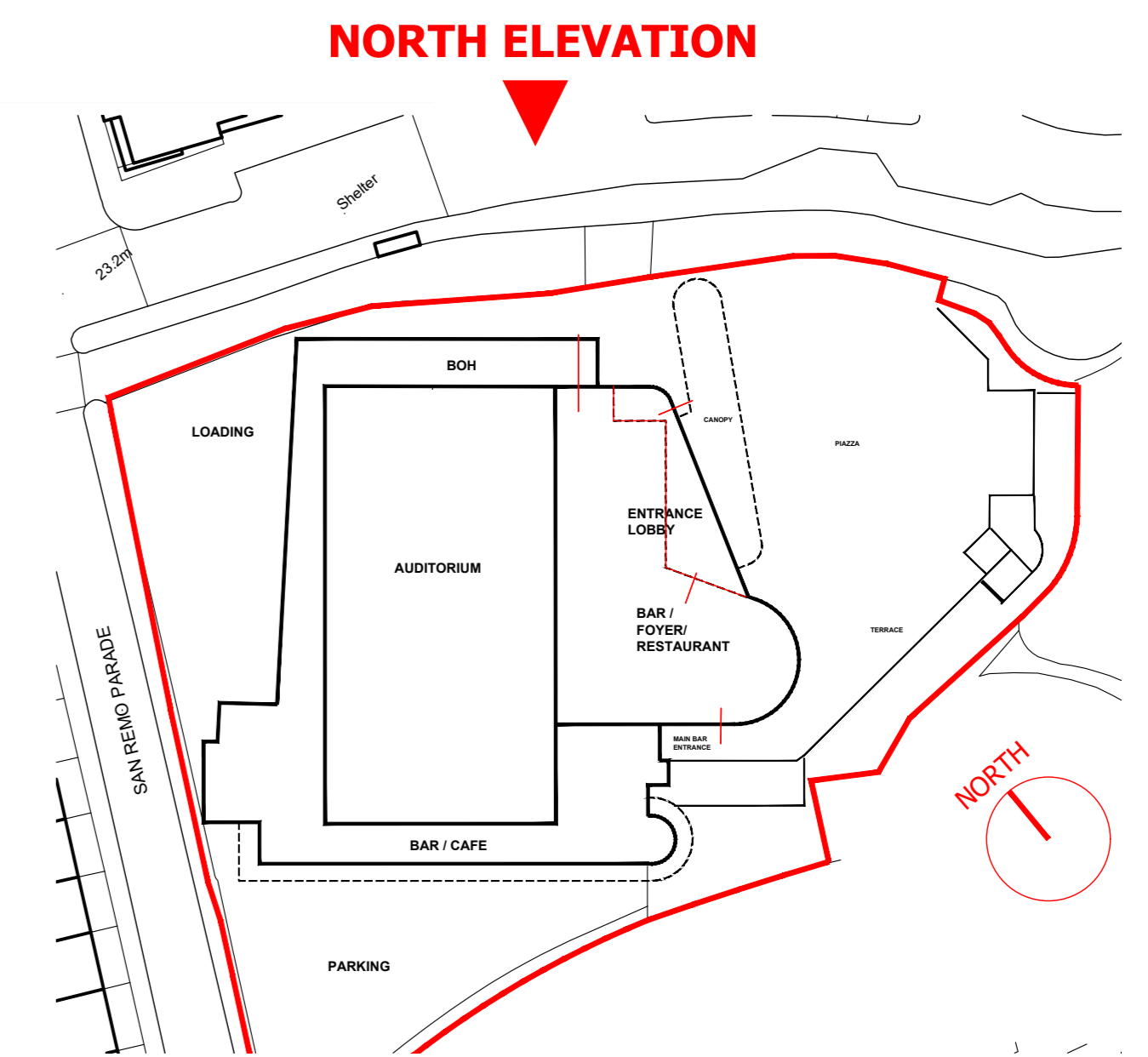
1 PROPOSED NORTH ELEVATION

1:100@A0



EXTERNAL MATERIALS DESCRIPTION

- 01 - Monocouche Render in two tones, White (main area); and Terracotta (entrance lobby). Exact colour and spec of render TBC
- 02 - Schueco FW550 Aluminium or equiv. glazing facade system in White. G-Values of Glazing TBC
- 03 - IKO Single ply membrane roof cover (dark grey) with white fascia and White Trespa Meeon panels to soffit
- 04 - Venue Signage, internally illuminated material TBC, colour Terracotta (RAL 050 60 30)
- 05 - Existing facade finishes such as render, mosaic tiles and brick
- 06 - Louvered Plant screen in dark grey, exact spec TBC subject to acoustic requirements
- 07 - Brise Soleil sun shading, colour to match glazed curtain walling in white
- 08 - glazing infill panel part of the glazing curtain wall system, colour to match the white frame
- 09 - painted finish in Terracotta (RAL 050 60 30)
- 10 - Aluminium rainwater down pipes and hoppers in natural mill finished colour (ALumasc Flushjoint or equivalent)
- 11 - White painted existing brickwork
- 12 - movement joints in render colour matched to render finish (white)
- 13 - 120mm Dia Lindab Steel concealed rainwater pipes in Terracotta colour (RAL 050 60 30)



NOTE:
Signage shown is indicative is sign and location only. Actual design of signage will be developed during detail design stage



2 PROPOSED NORTH ELEVATION PERSPECTIVE

NTS

General notes
For any other purpose other than planning, contractors, suppliers, etc. must not scale dimensions from this drawing. If in doubt ask! All dimensions should be checked on site.

This drawing is to be read in conjunction with all relevant other drawings, detailed specifications, Engineer's drawings, detail sheets and calculations. Assumptions have been made on some of the detail to existing fabric. Any discrepancies or differences to be reported back by the main contractor upon opening up.

Materials and workmanship
Any building work to be carried out with proper materials and in a workmanlike manner in accordance with regulation 7 of the Building Regulations. The builder may show compliance with regulation 7 in a number of ways including the appropriate use of a product bearing CE marking in accordance with the Construction Products Directive (89/106/EEC) as amended by the CE Marking Directive (93/68/EEC) or a product complying with an appropriate technical specification (as defined in those Directives), a British Standard or an alternative national technical specification of any state which is a contracting party to the European Economic Area which in use is equivalent, or a product covered by a national or European certificate issued by a European Technical Approval issuing body, and the conditions of use are in accordance with the terms of the certificate.

No	Date	Revisions
T02	11/09/2023	updated various elements
T01	01/09/2023	issued for tender
P01	17/07/2023	issued for planning

al3d
PROJECTS
DESIGN • DEVELOPMENT • DELIVERY

Unit 1 - The Hall
High Street,
Tetsworth,
Oxfordshire
OX9 7AB
07786 855685

Copyright © 2022 al3d

Project Name and Address
Cliffs Pavilion
Southend-On-Sea

Presenting Title
PROPOSED
North Elevation